



NOFLOODS FLEXWALL

PRODUCT CATALOGUE 2024-2025

When Simplicity Meets Functionality



Table of Content

1 - Product Catalogue 2024-2025 2 - Features & Benefits

3 - Concept & components 4 - FlexWall Models & Specifications

5 - Installation guide 6 - FlexWall Positioning 7 - Applications

8 - Contact us



NoFloods FlexWall

Product Catalogue

2024-2025

We are pleased to introduce the NoFloods FlexWall, an innovative and efficient solution for flood protection and water retention.

The FlexWall's unique design uses the floodwater itself to anchor the barrier: as water flows into the FlexWall, it stabilizes and automatically sets up as levels rise. For enhanced stability on various surfaces, an optional extension membrane can be attached to the front flap.



Explore the FlexWall's features and see how it can provide a reliable solution for you.

The FlexWall is fully reusable, extendable to cover large areas, and requires minimal storage space.

Available in a compact storage bag or a ready-to-deploy box for longer sections, the system is designed for easy, tool-free installation. For added stability in windy conditions, an optional weight belt can be attached to the front flap until the floodwater secures the barrier.



NoFloods FlexWall

Features & Benefits



Easy Installation

The intuitive design and light weight allows for easy and rapid deployment. The NoFloods FlexWall is simply rolled out and the water will do the rest. Shorter distances can easily be deployed by one man.



Sustainable

Due to the high quality PVC with UV protection the NoFloods FlexWall is 100% reusable and can be deployed again and again.



Protection

The integrity of NoFloods FlexWall ensures efficient protection against water. Technical studies in water retention indicate that a 1:2.5 ratio is generally sufficient for stability on surfaces like grass or asphalt. With a 1:4 ratio, the FlexWall offers exceptional safety.



Optimised Storage

The smart design of the NoFloods FlexWall ensures that the barrier takes up minimal storage space. The barriers can be easily stored in the specially designed storage bags or in customised "ready-to-deploy" storage boxes.



Sealing off Leakage

The NoFloods FlexWall's design, featuring an additional friction mat and extension membrane, minimises seepage. These elements ensure a secure fit and preserve the barrier's integrity, delivering reliable protection even in complex configurations.



Fighting Water with Water

The NoFloods FlexWall is securely anchored in place and stabilised by the pressure of the floodwater on the barrier. Increasing water height only further aids in stabilising the barrier adding pressure on both the bottom and vertical wall of the barrier.



Added Functionality

The NoFloods FlexWall comes with a variety of extra features like the option to attach the NoFloods weight belt air valves at the top, allowing for extra air filling to enhance its buoyancy as well as a pocket for flashlights for increased visibility.



Easily extendable

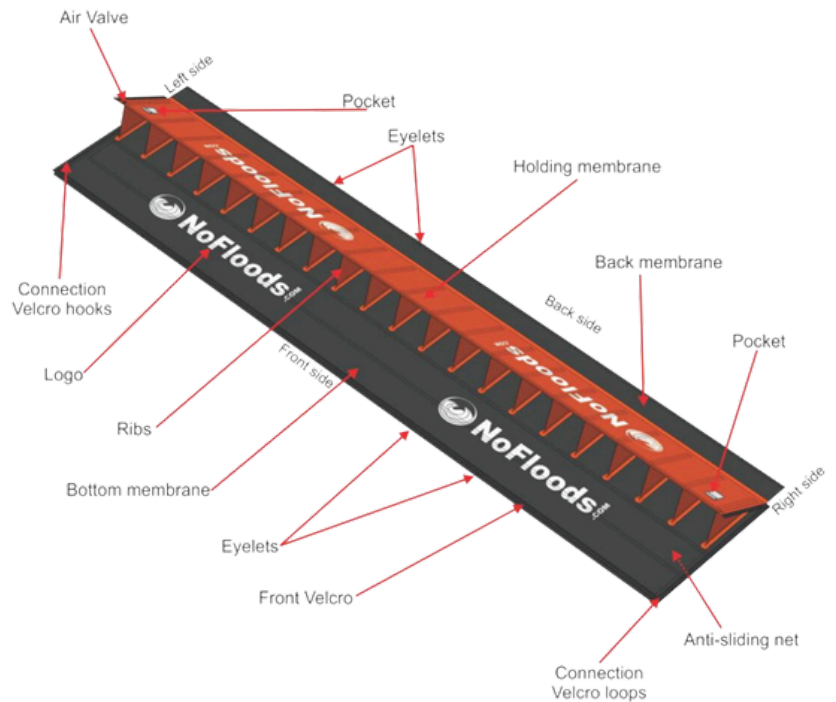
The NoFloods FlexWall can be extended via its specially designed velcro connector strips, allowing you to customize the barrier length to suit any requirement. This innovative feature ensures a secure, continuous barrier.

NoFloods FlexWall

Components

The NoFloods FlexWall excels by its smart and innovative design making deployment easy and fast as well as enhancing barrier stability and integrity.

The surface area of the FlexWall that contacts the ground is four times larger than its water retention height. This creates a vertical force that is four times greater than the horizontal pressure, ensuring strong adherence to the ground.



Concept

The concept behind the FlexWall is straightforward: water fills the open side of the barrier while simultaneously exerting pressure on the base, securing the barrier in place.

The speed or direction of the water doesn't matter, as it's the water pressure that causes the wall to open and rise.

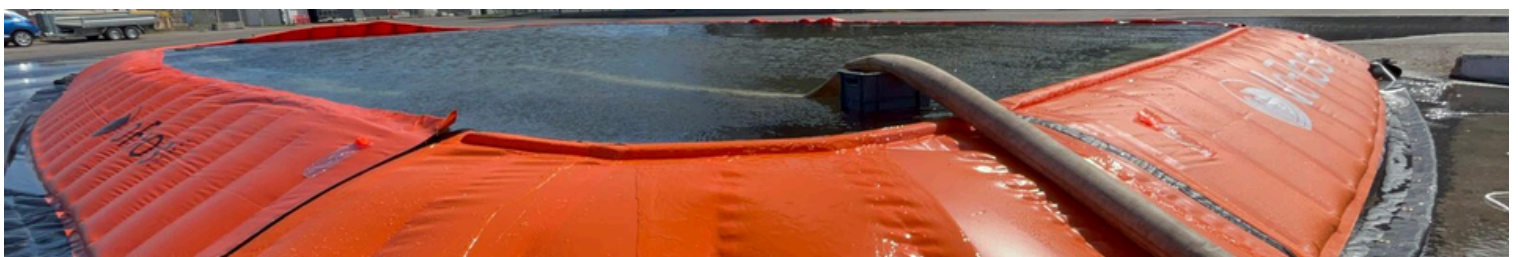


NoFloods FlexWall

Models & Specs

The NoFloods FlexWall is available in five retention heights (25 cm to 150 cm) and standard lengths of 5 to 10 meters, all of which can be easily extended using the velcro connector strips at the ends.

Model & Product ID	Retention Height (cm)	Dimensions L x W x H (cm)	Product Weight (Kg)	Recommended Deployment
NoFloods FlexWall25, 5-meter section AS-FW21	25	550 x 132 x 25	13	Minor Flooding / Private or Industrial Protecting houses, private or industrial property, infrastructure
NoFloods FlexWall25, 10-meter section AS-FW21	25	1050 x 132 x 25	22	
NoFloods FlexWall50, 5-meter section AS-FW41	50	550 x 246 x 50	18	Minor Flooding / Private or Industrial Protecting houses, private or industrial property, infrastructure
NoFloods FlexWall50, 10-meter section AS-FW42	50	1050 x 246 x 50	36	
NoFloods FlexWall75, 5-meter section AS-FW51	75	550 x 360 x 75	26	Moderate flooding / Private or Industrial Protecting infrastructure, coastal protection, dikes, etc.
NoFloods FlexWall75, 10-meter section AS-FW52	75	1050 x 360 x 75	41	
NoFloods FlexWall100, 5-meter section AS-FW61	100	550 x 432 x 100	34	Severe flooding / Industrial Protecting infrastructure, coastal protection, dikes, etc.
NoFloods FlexWall100, 10-meter section AS-FW62	100	1050 x 432 x 100	69	
NoFloods FlexWall150, 5-meter section AS-FW71	150	550 x 632 x 150	105	Severe flooding / Industrial Protecting infrastructure, coastal protection, dikes, etc.
NoFloods FlexWall150, 10-meter section AS-FW72	150	1050 x 632 x 150	212	
NoFloods Extension Membrane, 5-meter section CP-MB3M	N/A	550 x 250	12	Seepage prone surfaces like gravel, sand grass etc
NoFloods Extension Membrane, 10-meter section CP-MB3N	N/A	1050 x 250	23	
NoFloods Weight Belt, 5-meter section AS-WB31	N/A	550 x 20 x 2	7	Windy or seepage prone conditions





Installation Guide

Deployment, Extension & After Use

1

Barrier Orientation

Place the FlexWall at the chosen location and unroll it on the ground, ensuring there is sufficient distance from the structure it's protecting. If repositioning is needed, it can be pulled by hand. However, moving long, connected sections is challenging and time-consuming, so it is advisable to carefully assess the deployment area in advance.

2

Unfold and Secure

Fully unfold the NoFloods FlexWall on the ground and secure the front flap by placing weights on it. This enhances stability and reduces the risk of seepage underneath the wall. For deployment on seepage prone surfaces or in windy conditions it is recommended to attach the NoFloods Weight Belt and/or the NoFloods Extension Membrane.

Extension of Barriers

3



To extend the FlexWall, connect two fully unfolded sections at the specially designed extension velcro strips visible at each end of the barrier. Ensure that the connection is made on dry land, as attempting to connect the walls in water can be problematic, especially if temperatures are below freezing. A level surface is required, particularly under the ends of the FlexWalls being joined.



4

After Use

When the water recedes and the FlexWall is no longer required, it is advisable to clean it with fresh water and allow it to dry before storage. To clean and dry the FlexWall, use the straps located every 1.50 meters along the bottom of the wall. Once the barrier is clean and completely dry, it can be folded and rolled up.



NoFloods FlexWall

Positioning

Positioning Above Water Level

The ends of the FlexWalls are not closed, hence they must be positioned above the water level. As water can move freely within the FlexWall, it is crucial to ensure that both the front and back of the barrier are elevated above the highest expected flood level.



Forming Curves and Bends

The FlexWall is designed to be flexible, allowing for deployment in curves and bends to suit a wide range of protection needs, including the ability to fully encircle buildings and other structures. To ensure seamless transitions at sharp angles, such as 90-degree turns, we have developed specialized inward and outward corner pieces.

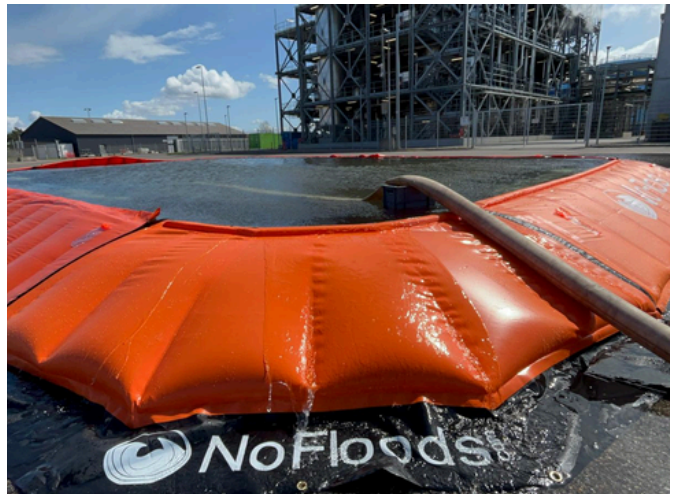
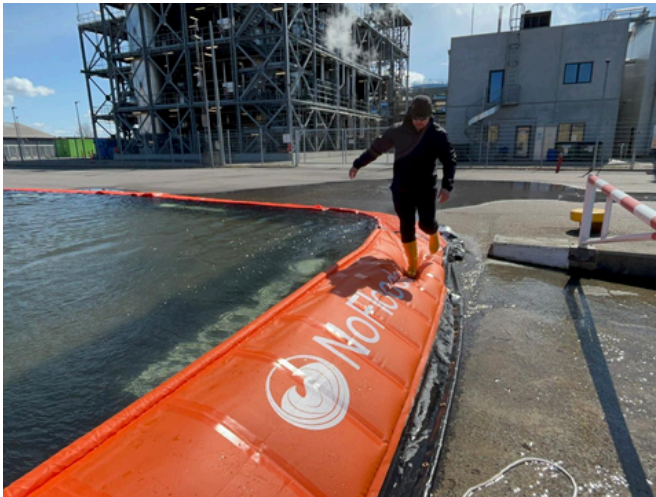


Applications

The NoFloods FlexWall offers versatile applications across various settings, providing effective solutions for numerous scenarios. For optimal use and maintenance of the FlexWall, always refer to the user manual for detailed instructions and guidelines. The manual provides essential information on setup, cleaning, and storage to ensure the longevity and effectiveness of the barrier.



Applications



Should you have any questions or require further assistance, please do not hesitate to contact us. Our team is available to provide additional support and address any concerns you may have.



Contact Us



Hareskovvej 17i
4400 Kalundborg Denmark



+45 53 79 20 87



+4570707482



info@nofloods.com



www.nofloods.com